



Photoelectric beam sensor 1-20m infrared gate sensors

Automatic door sensor infrared photocell, When interrupting the infrared, the relay will output switch signal, it can work for parking barrier, walking gate, vehicle gate as body induction. It also can work as window, door and passageway anti-burglar detection.



12 / 24V Automatic door sensor infrared photocell

Automatic door sensor infrared photocell, When interrupting the infrared, the relay will output switch signal, it can work for parking barrier, walking gate, vehicle gate as body induction. It also can work as window, door and passageway anti-burglar detection.



Technical parameter

Power supply	12/24(VAC/VDC)
Max.Range up	20Meters(indoor or outdoor)
Opera temperature	-10-+60°C
Max.TX working current	25mA
Max. RX working current	35mA
Max. Relay contact	Max 500mA e 48Vac/dc
IP rate	Ip65 with rubber

Features:

- 1.Single beam sensor/single beam detector is used for automatic slide door, shutter door , garage door windows etc.
- 2.Consists of a transmitter and a receiver, and the integrated amplifier can produce infrared beam.Narrow infrared beam (I or II) can avoid interruption by external light.
- 3.Even installed at low height(20-40cm from the floor), the detecting distance can also be guaranteed(2-20meters).
- 4.The IR-20 provides a self-detecting function for the sliding doors. Once the self-detecting beam is interrupted, the door will stop closing and reverse rapidly to the utmost width. The door will open until the detecting beam is resumed. When the door completely closes, the detecting beam becomes invalid.

Operation:

1. Install each pair at the opposite positions. Then there is a infrared area between these two detector parts. When someone passes the infrared region, the detector will send alarm signal to the security alarm host (which not included here).
2. Great to be installed for security system in school, office building, hospital, home yard, etc.
3. Detecting range is stable in bad weather conditions, like rain, dust, etc.
4. English Usage Manual included in the pack. It will give you detailed instructions with diagram

Connection

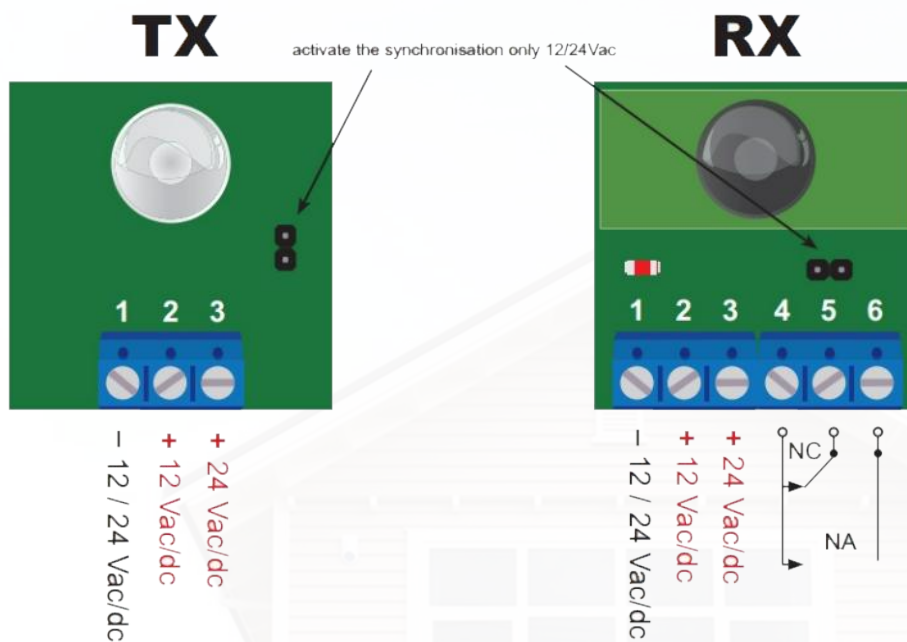
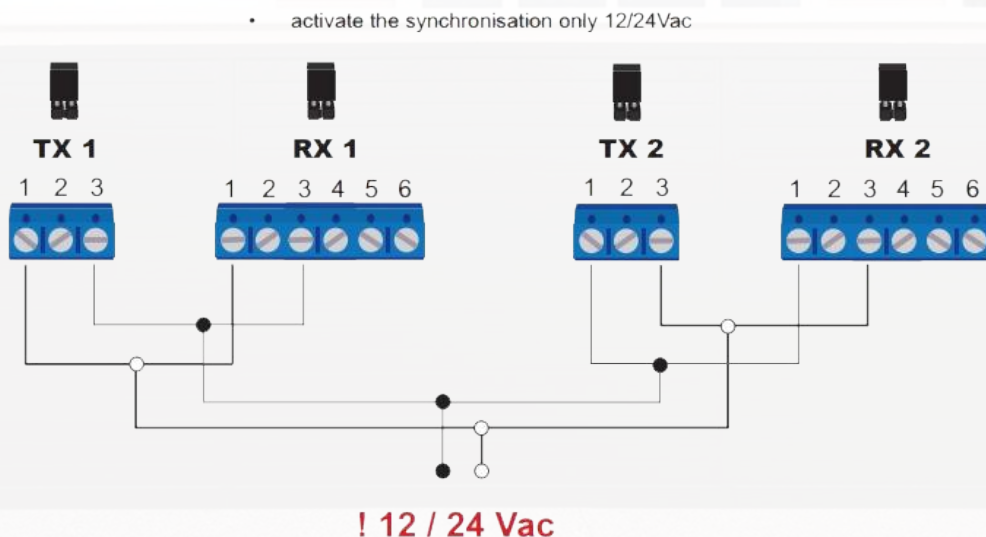
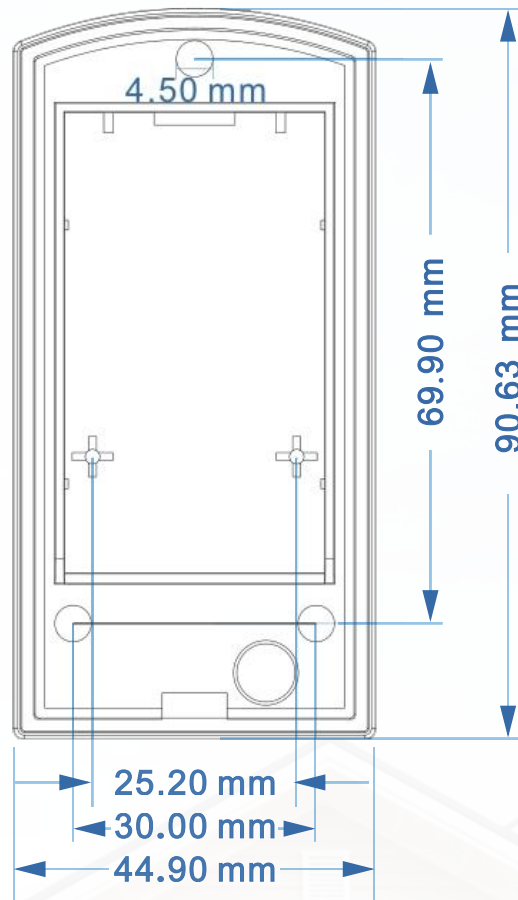


Diagram:

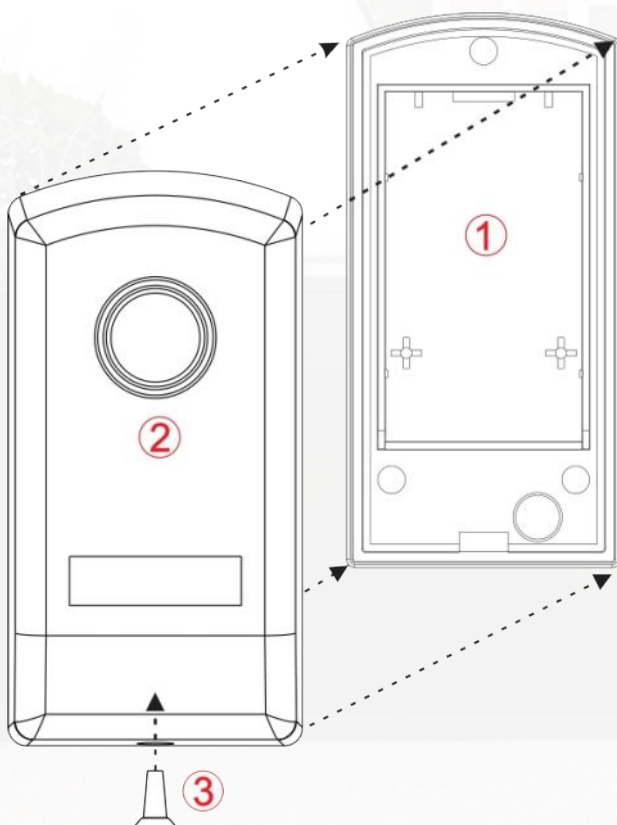


Note: For one-to-one use: using AC and need to be shorted by the jump line hat

Product Size:



Installation:



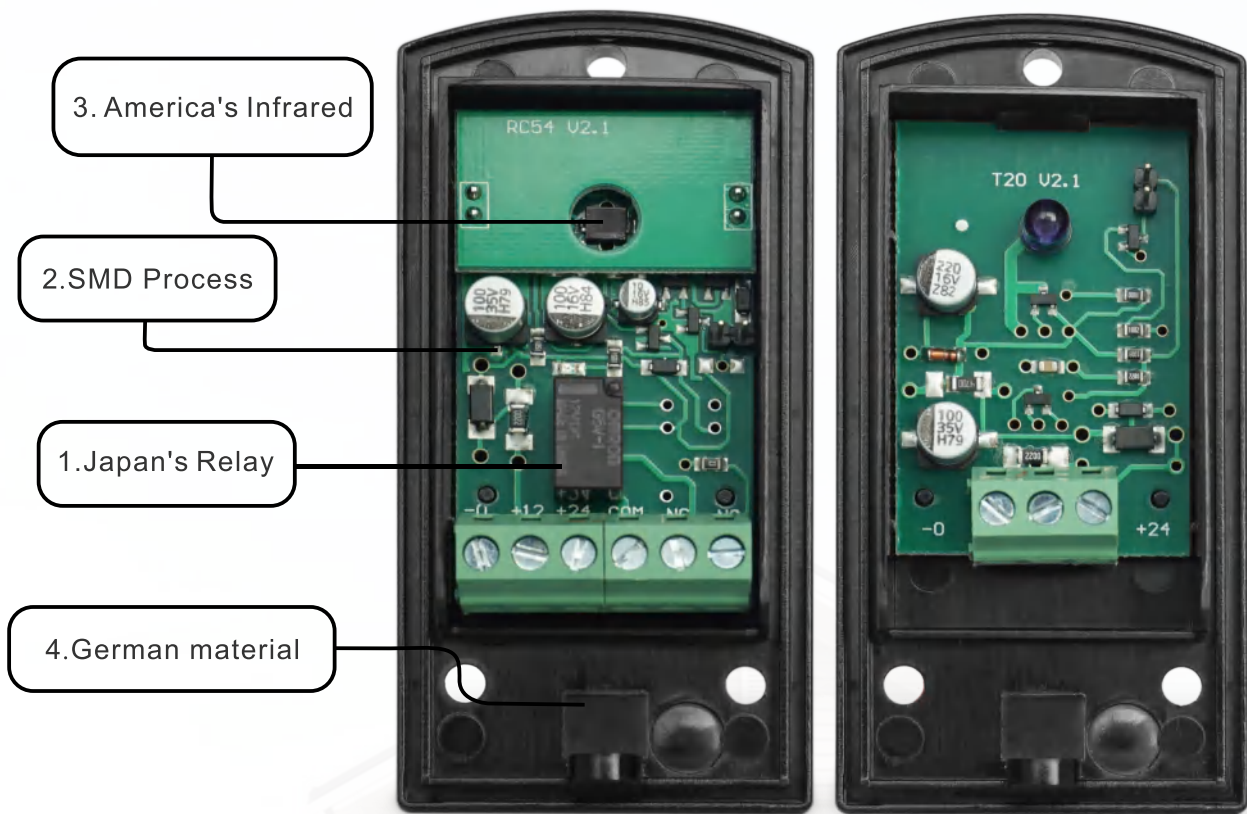
1. To open the IR-20M, lift the front panel of the photocell. Insert the cables in their housing and fix the base to the wall.

2. If the photocell has to be mounted on a wall, drill the three 5 \varnothing holes and fit suitable screw anchors. If the photocell has to be mounted on metal, drill the three 3 \varnothing holes for fitting with the self-tapping screws.

3. Make the connections. Power the photocells with a voltage between 12 and 24V DC/AC. If positioning, alignment and connection have been carried out properly, the red LED on the receiver will be off. Each time the ray is interrupted, the red LED switches on.

4. Cover the photocell with the front panel. Insert to the stop and close it. Interrupt the ray several times checking the relay response. Fix the front panels with the provided screws.

High quality photoeye:



JUTAI photocell beam sensors ordering information:

IR-20	20M wire type photo beam sensor
WIS-30	30M wireless type photocells
IS-30R	30M wireless type 180 degrees rotation photo beams
IRR-4M	reflective photocell sensors



We are very willing to help our customers to develop their own brand and assist customers in their local marketing. And not only photocell sensor, but also a series of high-quality products around the automatic door and villa security solutions. Both of us will create more and more benefits, growing up together.



Factory Address
5F, Mingjinhai Industrial park,
Shiyantown, BaoAn, Shenzhen, China

<https://www.jutaigateaccess.com>

<https://www.jutairfid.com>